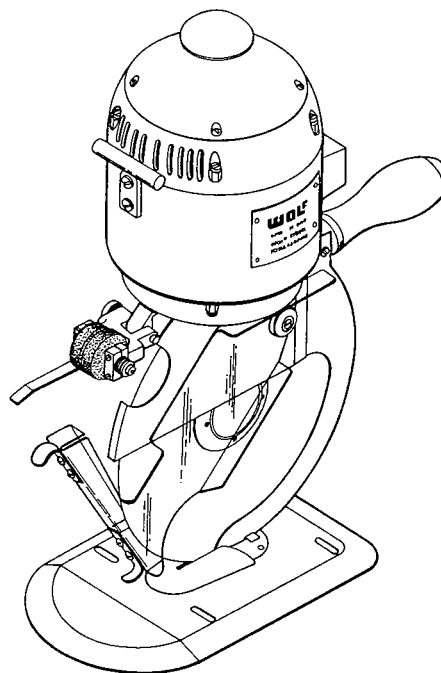


# WOLF<sup>®</sup>

## BIG 'O'

### PARTS AND SERVICE MANUAL

1st EDITION  
PUBLISHED DEC. 1983



### SERVICE INSTRUCTIONS

#### WARNING

This is a hazardous type of machinery and should be used with care. Always disconnect electrical connector before performing repairs, adjustments or maintenance. Be sure machine is properly grounded. Never place hands or any part of your person in the path of the machine when it's in service. Keep the front guard as low as possible during operation and completely down when not in use. For personal safety the operator should remove all loose fitting jewelry, shouldn't wear loose or baggy fitting clothing and persons with long hair should cover or pull it back.

Keep the machine clean and properly adjusted, as this will add to its life and efficiency. When ordering replacement parts be sure to give Part No., description and machine size.

#### MOTOR ROTATION

Before placing three phase machines in service be sure the knife rotates in a counter-clockwise direction when looking at the nameplate side of the machine. The rotation can be checked by a flash contact at the electrical connector with the switch turned on. To reverse direction, interchange two wires (not ground wire) at electrical connector.

**CAUTION:** Should the machine be run in the wrong direction parts could unscrew and damage machine. Single phase machines always rotate in the proper direction.

#### LUBRICATION

The grease cup in the standard should be half filled with grease. Use only a good grade of cup grease.

To oil sharpener journals, remove screw in end of bushing shaft and oil. Keep emery free from oil and grease. To do this, remove emery and rub wheels together until they show a good surface, or spray with Keep-M-Kleen solution (Order #2100600).

#### TO SHARPEN KNIFE

It is most essential that a keen cutting edge be kept on the knife at all times, as this insures clean and easy cutting. To obtain this, the grinding wheels must be kept properly adjusted. Because of the wear of knife and emery wheels, it is necessary to adjust emeries toward the knife to avoid long bevel. Wheels must touch knife evenly. Adjustment is made by releasing screws clamping the threaded journals. The journals can then be turned to the proper position. Care should be taken that the emery wheels do not go too far down on knife. A good bevel of 1/8" makes a good cutting edge. Emeries must spin free at all times.

#### TO REMOVE KNIFE

To remove knife, place pin in hole through standard. Use knife wrench and turn knife nut to left. When knife wears, move toeplate back so that knife is about 1/16" from end of slot. Be sure to tighten screws that secure toeplate.

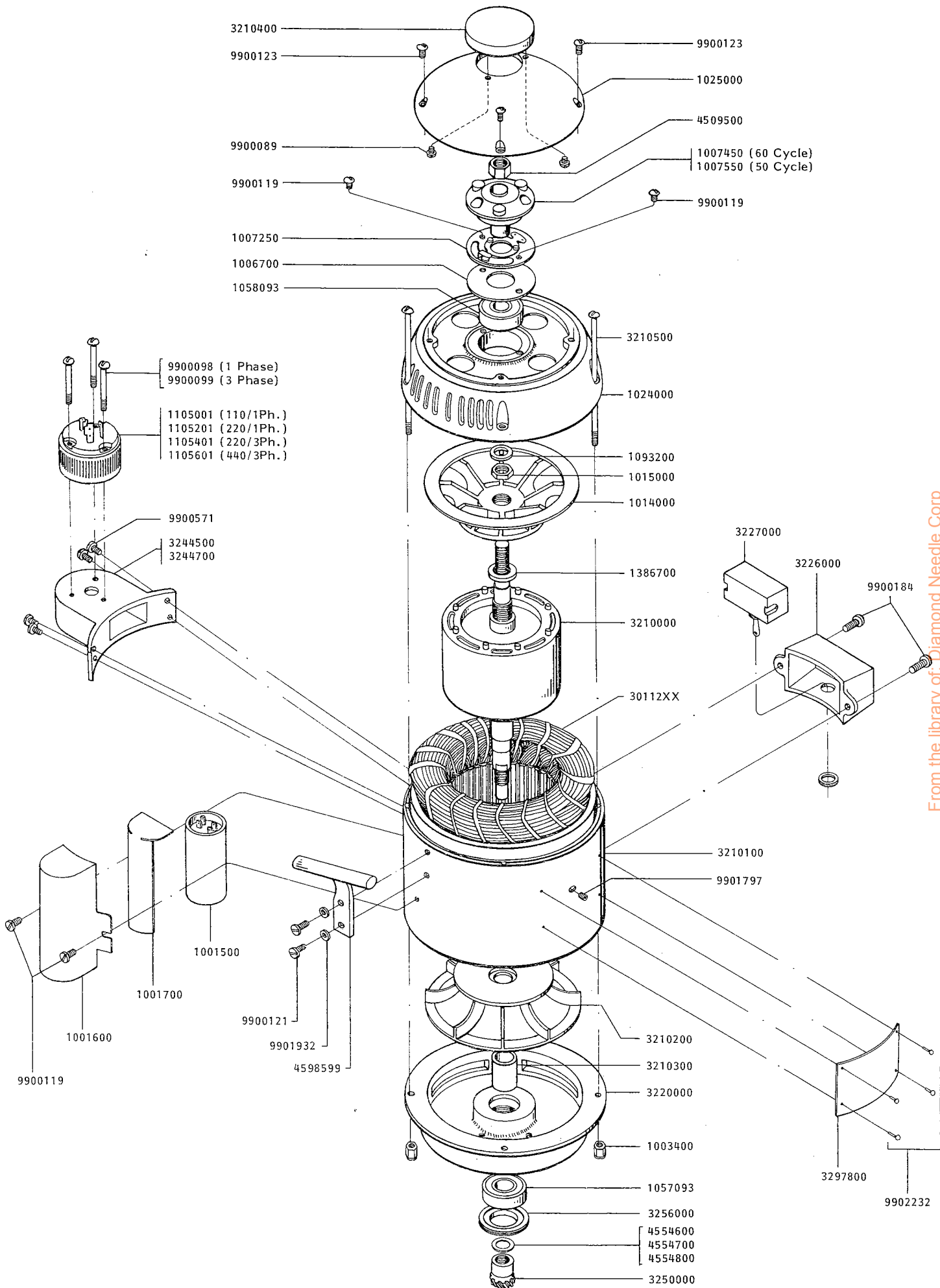
#### TO REMOVE GEAR

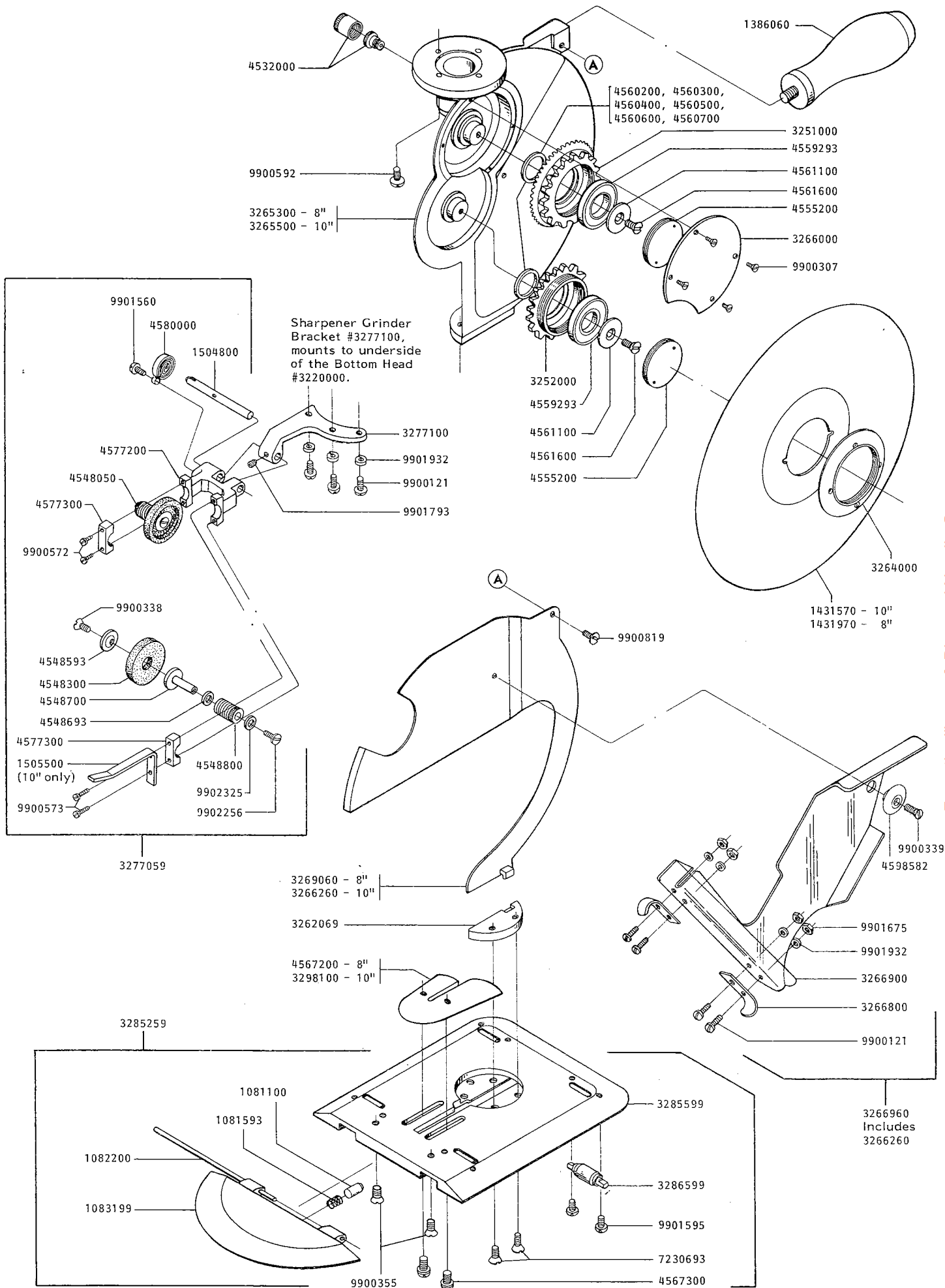
To remove knife gear, have knife on gear. Then put pin in knife and standard and loosen grease cap with pin wrench. Remove knife and cap. Then remove screw and washer. The gear can then be lifted off. Be sure not to lose any washers that may be under bearing, as they adjust the mesh of the gears. When replacing, be sure the screw and cap are tight.

**WOLF<sup>®</sup>**  
1st/Since 1888

#### THE WOLF MACHINE COMPANY

5570 Creek Road / Cincinnati, Ohio 45242 / U.S.A.  
Phone: 513-791-5194 / Telex #214308 WEPCO  
TOLL FREE 1-800-543-WOLF / Telex Int. #6842069





Sharpener Grinder  
Bracket #3277100,  
mounts to underside  
of the Bottom Head  
#3220000.

PART NUMBERS AND DESCRIPTIONS FOR ENTIRE MACHINE LISTED IN NUMERICAL ORDER.

Part No.	Description	Quantity used if more than 1	Part No.	Description	Quantity used if more than 1
1001500	Capacitor 110V		3277100	Grinder Bracket 10"	
1001600	Capacitor Cover		3285259	Footplate Complete	
1001700	Capacitor Insulator		3285599	Footplate	
1003400	Acorn Nut	4	3286599	Roller Complete	4
1006700	Insulator		3297800	Name Plate	
1007250	Inner Breaker		3298100	Toe Plate - 10"	
1007450	Outer Breaker 60 Cycle		4509500	Nut	
1007550	Outer Breaker 50 Cycle		4532000	Grease Cap	
1014000	Fan - Top		4548050	Emery Wheel & Shaft Complete	2
1015000	Locknut		4548300	Emery Wheel	2
1024000	Top Head		4548593	Emery Wheel Washer	2
1025000	Cover		4548693	1/4 - Nylon Washer	2
1057093	Bearing for Bottom Head		4548700	Emery Wheel Shaft	2
1058093	Bearing for Top Head		4548800	Grinder Journal	2
1081100	Pin for Lifter Spring		4554600	Shim .001	
1081593	Lifter Spring		4554700	Shim .003	
1082200	Hinge Pin		4554800	Shim .005	
1083199	Lifter		4555200	Bearing Locknut	
1093200	Bearing Spacer		4559293	Knife Bearing	
1105001	Male Twist Lock Plug (1Ph., 110V)		4560200	Shim .001	
1105201	Male Twist Lock Plug (1Ph., 220V)		4560300	Shim .003	
1105401	Male Twist Lock Plug (3Ph., 220V)		4560400	Shim .005	
1105601	Male Twist Lock Plug (3Ph., 440V)		4560500	Shim .010	
1386060	Handle		4560600	Shim .032	
1386700	Rear Fan Spacer		4560700	Shim .002	
1431570	10" Knife - High Speed		4561100	Lockwasher	2
1431970	8" Knife - High Speed		4561600	Left Hand Screw	2
1504800	Grinder Shaft		4567200	Toe Plate - 8"	
1505500	Grinder Handle - 10" only		4567300	Screw to secure Toeplate	2
3011201	Stator 110/1/60		4577200	Grinder Frame	
3011204	Stator 220/1/50		4577300	Grinder Frame Cap	2
3011211	Stator 220-380/3/50-60		4580000	Grinder Spring	
FOR ANY OTHER STATOR VOLTAGES, PLEASE SPECIFY			4598582	Pivot Bushing & Screw	
3210000	Rotor		4598599	Carrier Handle	
3210100	Motor Case		7230693	Hardened Screw	5
3210200	Bottom Fan		9900089	Round Head Screw	2
3210300	Bottom Fan Spacer		9900098	Screw to secure Twist-Lock Plug - 1 Ph.	3
3210400	Rotor Knob Cover		9900099	Screw to secure Twist-Lock Plug - 3 Ph.	3
3210500	Motor Bolt	4	9900119	Round Head Screw	2 & 2
3220000	Bottom Head		9900121	Round Head Screw	2, 3 & 4
3226000	Switch Box		9900123	Round Head Screw	2
3227000	Switch		9900184	Round Head Screw	2
3244500	Inlet Box Twist-Lock 1 Ph. Plug		9900307	Flat Head Screw	4
3244700	Inlet Box Twist-Lock 3 Ph. Plug		9900355	Flat Head Screw	2
3250000	Pinion Gear		9900338	Locking Screw	2
3251000	Double Gear		9900339	Screw to secure Plastic Guard	
3252000	Knife Gear		9900571	Screw to secure Connector Box	4
3256000	Locknut for Bottom Head Bearing		9900572	Screw to secure #4577300 - 8"	4
3262069	Filler Block		9900573	Screw to secure #1505500 - 10" only	2
3264000	Knife Nut		9900592	Fil. Head Screw	4
3265300	Standard - 8"		9900819	Screw to secure Rear Knife Guard	
3265500	Standard - 10"		9901560	Screw to secure Spring	
3266000	Cover for Double Gear		9901595	Round Head Screw to secure Rollers	8
3266260	Rear Knife Guard Bracket - 10"		9901675	Nut	4
3266800	10" OSHA Plastic Guard Bracket	2	9901793	Set Screw	
3266900	10" OSHA Plastic Guard		9901797	Set Screw	4
3266960	10" OSHA Guard Complete		9901932	Lock Washer	2, 3 & 4
3269060	Rear Knife Guard Bracket - 8"		9902232	Escutcheon Pin	4
3269550	8" OSHA Guard Complet (Not shown)		9902256	Screw to secure Journal	2
3277059	Grinder Frame Complete		9902325	Washer	2

From the library of: Diamond Needle Corp